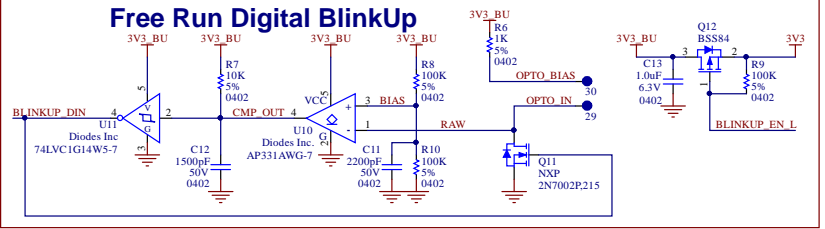
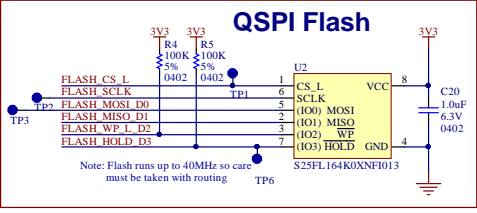
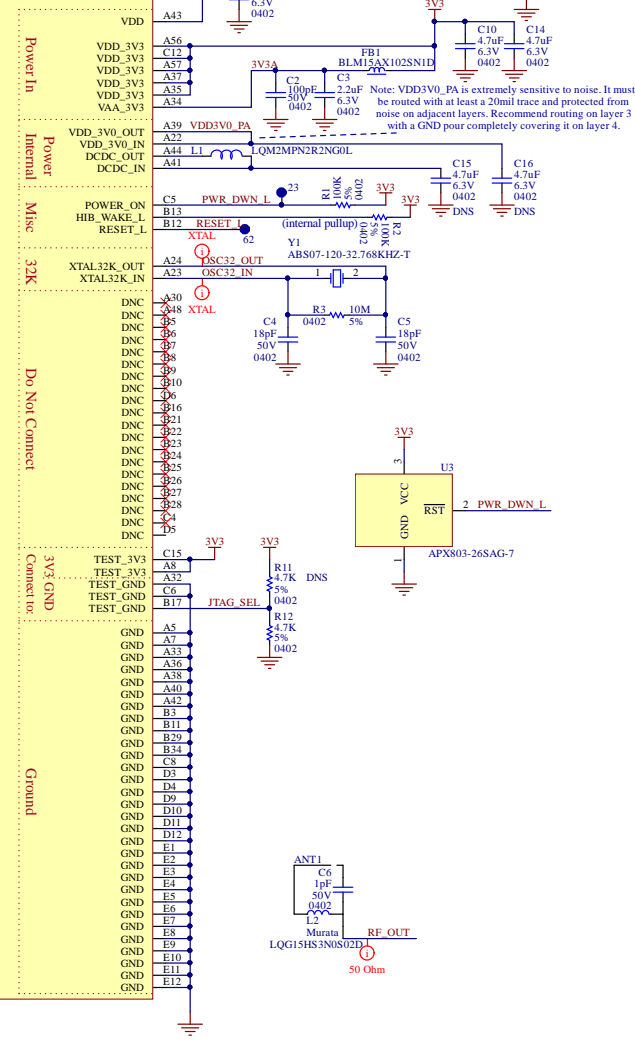


imp005 Module

11	SPI_ABCD_SCLK	A11	PinA (SCLK, 0)	VDD
9	SPI_ABCD_MOSI	A9	PinB (MOSI, 1)	VDD_3V3
10	SPI_ABCD_MISO	A12	PinC (MISO)	VDD_3V3
12	SPI_ABCD_CS	A10	PinD (CS, L, 1)	VDD_3V3
16	PIN0	A26	PinE (PWM, 0)	VDD_3V3
17	PIN0	A27	PinF (PWM, 0)	VDD_3V3
16	PIN0	A31	PinG (PWM, 0)	VDD_3V3
27	PINH	A45	PinH	VDD_3V3
41	PINI	A47	PinI	VDD_3V3
41	PINK	A46	PinJ (SCL, 0)	VDD_3V3
42	PINL	B1	PinK (SDA, 1)	VDD_3V3
49	PINM	A49	PinL	VDD_3V3
47	PINN	C16	PinM	VDD_3V3
32	PINP	B38	PinN	VDD_3V3
48	PINR	B32	PinO (0)	VDD_3V3
26	PINT	B19	PinR (USB_PWR_EN)	VDD_3V3
53	PINW	D7	PinS (PWM, 0)	VDD_3V3
51	PINY	D8	PinT	VDD_3V3
28	PINW	C9	PinU (PWM, 0)	VDD_3V3
31	PINY	C11	PinV (PWM, 0)	VDD_3V3
		C14	PinW (USB_FAULT_L)	VDD_3V3
		C14	PinY	VDD_3V3
	JTAG_TDO	B4	PinXA (WAKE)	DNC
	JTAG_TMS	B20	PinXB (WAKE)	DNC
	JTAG_TRST	C2	PinXC (WAKE)	DNC
	JTAG_TDI	C3	PinXD (WAKE)	DNC
	JTAG_TCK	C13	PinXE (WAKE)	DNC
	UART0_TX	A55	UART0_TX	DNC
	UART0_RX	A52	UART0_RX	DNC
	UART0_RTS	A53	UART0_RTS	DNC
	UART0_CTS	A54	UART0_CTS	DNC
	UART1_TX	B15	UART1_TX	DNC
	UART1_RX	B14	UART1_RX	DNC
	UART2_TX	C7	UART2_TX	DNC
	UART2_RX	B18	UART2_RX	DNC
	SPI0_SCLK	B32	SPI0_SCLK	DNC
	SPI0_MOSI	B30	SPI0_MOSI	DNC
	SPI0_MISO	B31	SPI0_MISO	DNC
	SPI0_CS_L	B33	SPI0_CS_L	DNC
	I2C0_SCL	B2	I2C0_SCL	DNC
	I2C0_SDA	C1	I2C0_SDA	DNC
	IMP_USB_N	A28	USB2_DN	DNC
	IMP_USB_P	A29	USB2_DP	DNC
	RMII_MDC	A15	RMII_MDC	DNC
	RMII_MDIO	A29	RMII_MDIO	DNC
	RMII_CLOCK	A17	RMII_REF_CLK	DNC
	RMII_TXD0	D2	RMII_TXD0	DNC
	RMII_TXD1	A19	RMII_TXD1	DNC
	RMII_TXEN	A13	RMII_TXEN	DNC
	RMII_RXD0	A16	RMII_RXD0	DNC
	RMII_RXD1	A18	RMII_RXD1	DNC
	RMII_CRSDV	A14	RMII_CRSDV	DNC
	RF_OUT	A6	ANT0	DNC
		A25	ANT_DIV0	DNC
		A20	ANT_DIV1	DNC
	FLASH_SCLK	R13	SFLASH_SCLK	DNC
	FLASH_CS_L	A1	SFLASH_CS_L	DNC
	FLASH_MOSI_D0	R14	SFLASH_MOSI_0	DNC
	FLASH_MISO_D1	R15	SFLASH_MISO_1	DNC
	FLASH_WP_L_D2	R16	SFLASH_MISO_2	DNC
	FLASH_HOLD_D3	R17	SFLASH_MISO_3	DNC
	BLINKUP_DIN	A50	OPTO_DIN	DNC
	BLINKUP_EN_L	A51	OPTO_EN_L	DNC
	LED_RED	B35	LED_RED	DNC
	LED_GRN	B36	LED_GRN	DNC

GPIO (Secondary Function) Not Yet Supported Dedicated Interfaces [No GPIO] Ethernet PHY RF Required Connections



Copyright © 2016, Electric Imp Inc.

THIS DOCUMENT CONTAINS PROPRIETARY AND CONFIDENTIAL INFORMATION OF ELECTRIC IMP, INC. AND SHALL NOT BE USED, DISCLOSED OR REPRODUCED, IN WHOLE OR IN PART, FOR ANY PURPOSE WITHOUT THE PRIOR WRITTEN CONSENT OF ELECTRIC IMP.

Design: imp005-EZ	Rev: 5.0	Electric Imp 5150 El Camino Real, Ste C-31 Los Altos, CA 94022
Sheet: 1 of 1	Date: 7/18/2017	Time: 5:37:24 PM
File: imp005-node_SchDoc		electric imp